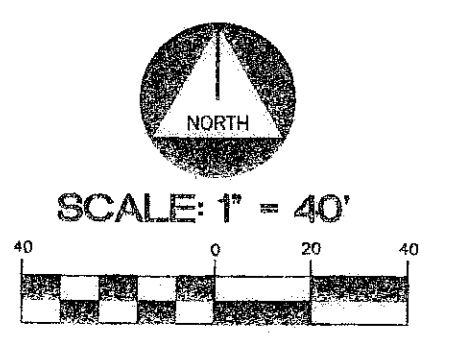


# BOYNTON TOWN CENTER - C3 REPLAT

A REPLAT OF A 'C3-PARCEL 2 COMMERCIAL' AND 'C3-PARCEL 3 TARGET'  
'BOYNTON TOWN CENTER, A P.C.D.'

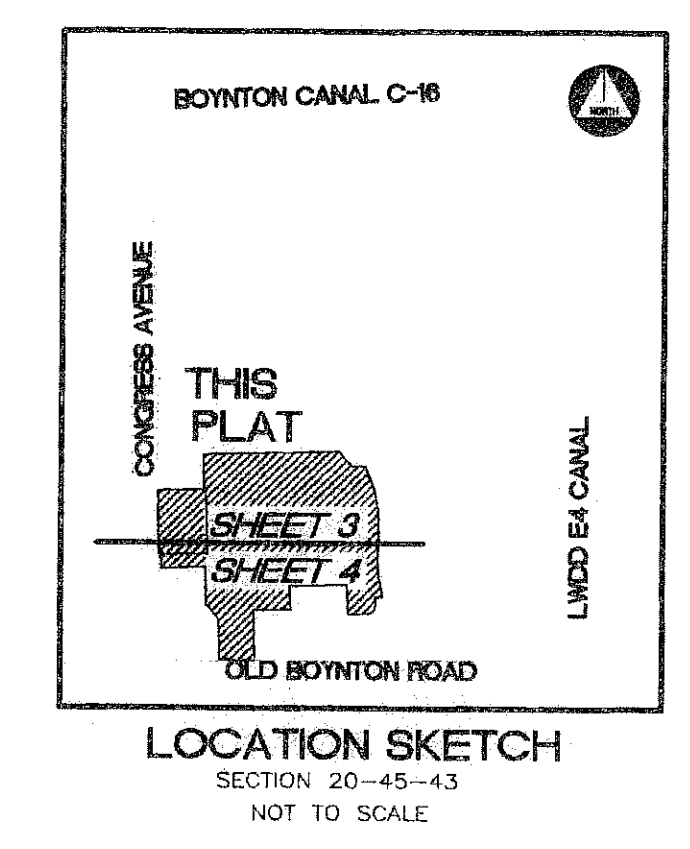
PLAT BOOK 106, PAGES 144-151 OF THE PUBLIC RECORDS OF PALM BEACH COUNTY, FLORIDA  
IN SECTION 20, TOWNSHIP 45 SOUTH, RANGE 43 EAST  
CITY OF BOYNTON BEACH, PALM BEACH COUNTY, FLORIDA  
JANUARY, 2008

PREPARED BY:  
WILLIAM S. PAYNE, PSM  
**WSP Consultants, Inc.**  
SURVEYORS & MAPPERS  
19006 1ST STREET S.W., LUTZ, FL 33548  
PHONE (813) 909-2420  
CERTIFICATE OF AUTHORIZATION NO.: LB 7188

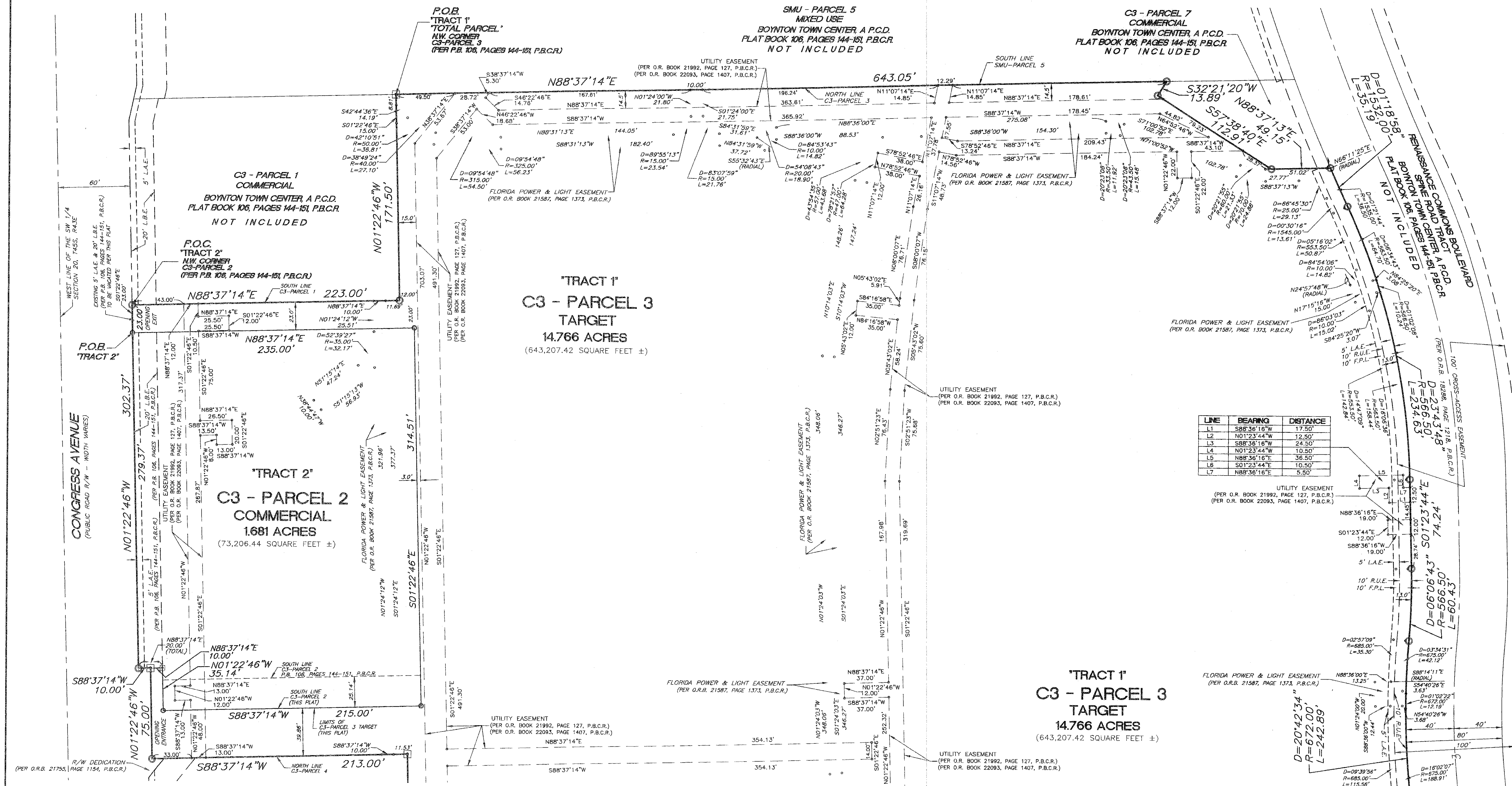


**LEGEND**

P.O.C.	POINT OF COMMENCEMENT	F.P.L.	FLORIDA POWER & LIGHT	S.F.	SQUARE FEET
P.O.B.	POINT OF BEGINNING	O.R.B.	OFFICIAL RECORD BOOK	L.A.E.	LIMITED ACCESS EASEMENT
P.B.C.R.	PALM BEACH COUNTY RECORDS	P.B.	PLAT BOOK	L.B.E.	LANDSCAPE BUFFER EASEMENT
P.R.M.	PERMANENT REFERENCE MONUMENT	R/W	RIGHT-OF-WAY	R.U.E.	ROAD AND UTILITY EASEMENT
		D	CENTRAL ANGLE	¢	CENTERLINE
○	SET P.R.M. MAG NAIL WITH 1.5" DIAMETER ALUMINUM DISK STAMPED "P.R.M." L.B. # 7188	R	RADIUS		
□	SET P.R.M. 4" X 4" CONCRETE MONUMENT WITH 2" DIAMETER ALUMINUM DISK STAMPED "P.R.M." L.B. # 7188	L	ARC LENGTH		
		C/L	CENTERLINE		



SHEET 3 OF 4



LINE	BEARING	DISTANCE
L1	S88°36'16"W	17.50'
L2	N01°23'44"E	12.50'
L3	S88°36'16"W	24.50'
L4	N01°23'44"E	10.50'
L5	N88°36'16"E	36.50'
L6	S01°23'44"E	10.50'
L7	N88°36'16"E	5.50'

MATCH LINE SEE SHEET 3 OF 3